

**Bushings** - Extra hard alloy bushings throughout.

**Box Construction** - Guards hydraulics from damage.

**Control Valve** - Multi function bucket control.

**Dual Cylinders (optional)** - 3,500 PSI double acting.

**Main Pivot Pin** - Oversize, flame hardened alloy steel.



**QT100 Eyes** - Alloy steel for increased strength and reduced weight.

**Mechanical Stops** - Heavy duty tilt stops, protect cylinders from pounding.

**Greased Pins** - Grease fittings mounted externally for easy access.

### Hydraulics

- Control Valve Features:**
- Load holding (bucket stays put).
  - Pressure relief (prevents cylinder damage).
  - Speed control (prevents slamming).
  - Hose management (multiple configurations left, right, or one hose on each side).

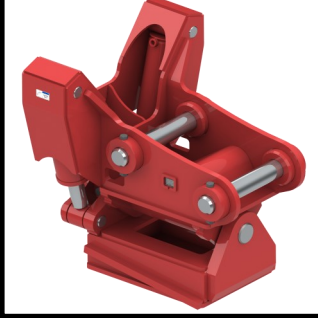
### Direct Pin



### Quick Pin



### Stealth QC



### TU Series Typical Specifications

| Carrier   | Model | Height mm [in] | Weight kg [lb] |
|-----------|-------|----------------|----------------|
| 13 - 17 t | 15TU  | 450 [18]       | 431 [950]      |
| 16 - 24 t | 20TU  | 570 [22]       | 506 [1,115]    |
| 22 - 28 t | 25TU  | 685 [27]       | 567 [1,250]    |
| 26 - 38 t | 30TU  | 787 [31]       | 624 [1,375]    |
| 35 - 50 t | 40TU  | 928 [36.5]     | 680 [1,500]    |

### Nye HD Tilt Units:

Heavy duty tilt function for existing hydraulic excavator attachments.

These ruggedly designed tilt units feature high holding and breakaway torque, low maintenance and have a 90° tilt range, 45° left and 45° right.

An optional internally mounted load control valve simplifies hydraulic installation by managing all major hydraulic functions and provides convenient hose routing on either, or both sides of the unit.

Nye tilt units are easy to install and do not require any welding or modification to the base machine. Safe, silent to operate, available in quick coupler and pin grabber compatible versions.

For more information:  
Call 905 897 2311 or visit [nye.ca](http://nye.ca).

[nye.ca/twist](http://nye.ca/twist)



All Nye products are warranted to be free of defects in materials and workmanship for a period of 2 years or 2,000 hours. Specifications subject to change.

[nye.ca/terms](http://nye.ca/terms)

**Nye Manufacturing Ltd.**  
3585 Mavis Rd.  
Mississauga, ON L5C 1T7  
Canada  
+1 905 897 2311  
[sales@nye.ca](mailto:sales@nye.ca) [nye.ca](http://nye.ca)



*Nye is a proud family owned Canadian business; going strong for over 60 years*

**Put our expertise to work for you!**

